

# Supadek Product Guide

Manufactured by Tilon UK, Supadek is designed and tested in accordance with:

**BS EN1281-1  
Temporary Works  
Equipment – Scaffolds.**

The guidance below is to ensure safe use and longevity of our product.

**Storage** – Product can be stored externally; it is recommended that the product is bundled and strapped in quantities no greater than 100. When bundles are stacked ensure that the ground is level, with bundles no more than 2 high. Use spacers to separate the bundles, positioned at equal points along the overall length.

**Inspection** - Supadek composite boards do not deteriorate from exposure to the elements, but misuse can result in damage. It is recommended that visual checks are carried out before use (cracks/punctures/notches or badly worn surfaces). End caps are an integral component of the board, ensure they fit securely. Damaged boards should be removed from the fleet and taken out of service.

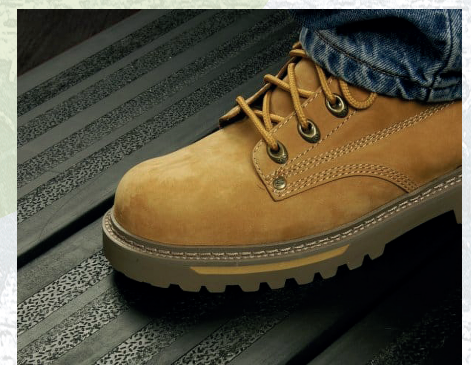
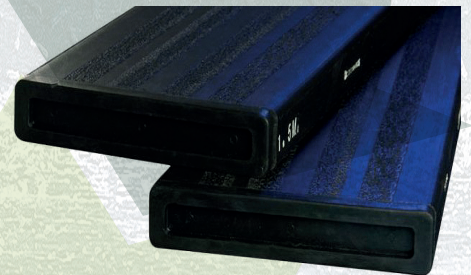
**Handling & General Use** – Product shall be handled, and best trade practices used in accordance with the technical & safety guidance notes of the National Access & Scaffolding Confederation. Should product be bombed from a structure or receive a particularly heavy impact the board should be removed from the fleet and taken out of service. Supadek boards can be cut down but ensure end caps are refitted, boards cannot be used as a sole plate.

**PPE** – Supadek is constructed from glass fibre reinforced polypropylene and does not require specialist handling or exposure precautions. It is recommended wearing gloves in extreme hot and cold temperatures, further to protective clothing as outlined in the technical & safety guidance notes of the National Access & Scaffold Confederation.

**Disposal** – Product is considered as common industrial waste and should not be disposed of by incineration as it can cause damage to incinerators by the formation of a vitrified mass. The most environmentally friendly way to dispose of Supadek is to contact Tilon and discuss recycling options.



 **Supadek**



**Summary** – information supplied in this document is based on manufacturing knowledge and test procedures when issued, it is provided in good faith with Tilon reserving the right to amend in the future. Users' attention is drawn to risks when product is used for any purpose other than the one which it was designed.

**This document does not exempt users from knowing and applying the rules regulating their activities. Users assume full responsibility for applying safety measures when product is in use.**